



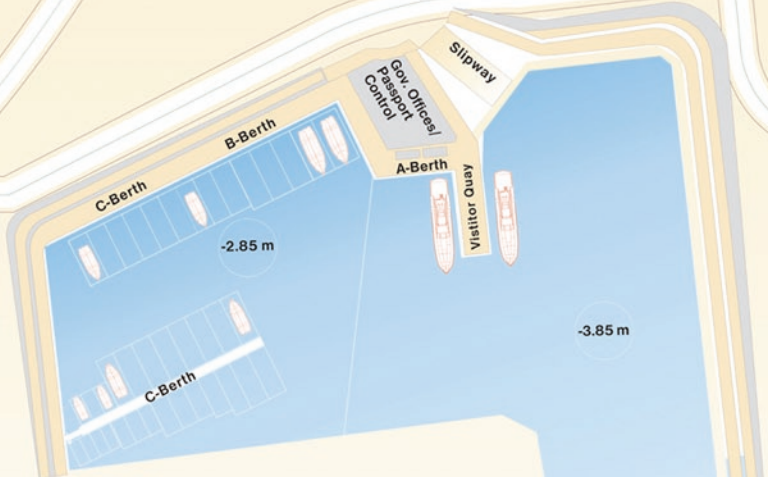
[www.tabaheights.com](http://www.tabaheights.com)

N29° 22'.30-E34° 47'.41

VHF Channel: #73

**Berth Sizes**

Visitor berth	20-30 m
A-Berth	20-25 m
B-Berth	20-25 m
C-Berth	10-14 m
D-Berth	6-14 m



Flashing Red

Flashing Green

Flashing Red



Flashing Green